



10 Prime insemination gun by pushing the plunger until semen is moved to the end of the sheath.



11 Place loaded insemination gun in a clean plastic glove and then inside your clothing to transport to cow.



12 Use a new glove for every insemination. Lubricate the glove with clean, non-toxic lubricant. Also, lubricate the anus with gloved hand.



13 Enter the rectum by forming a cone with your fingers. Thoroughly clean the rectum of manure and check the reproductive tract for abnormal conditions.



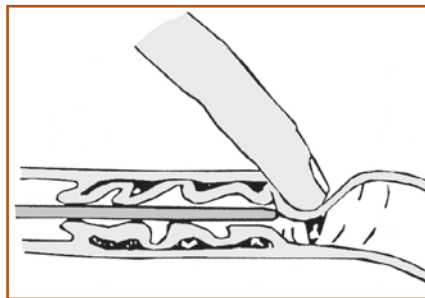
14 Clean manure from vulva and the underside of arm with a paper towel.



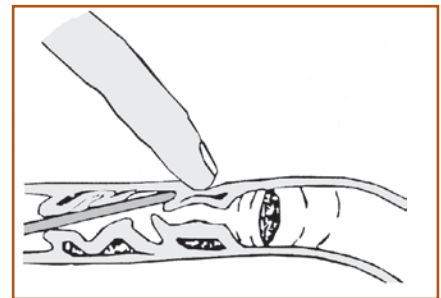
15 Place a clean v-spreader in the vulva.



16 Gently, smoothly pass the gun through the vagina to the opening of the cervical canal – the cervical os. Funnel gun tip into cervical os.



17 Hold cervix ahead of gun tip. Manipulate cervical folds to allow gun to pass. Place index finger at uterine end of cervix. Move gun tip forward to index finger.



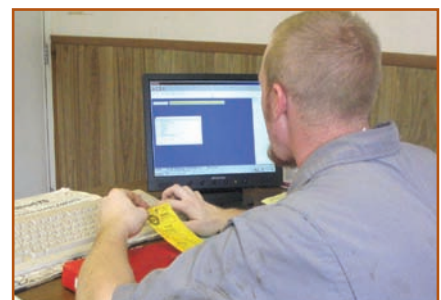
18 Concentrate on accurate semen placement. Be certain the gun tip is not caught in a thin area between cervical rings or is too deep into uterus.



19 Firmly hold cervix. Hold shoulder of gun between ring and middle fingers. Place right fingers against left arm to ensure gun is not pulled back into cervix during semen deposit.



20 Deposit semen into the uterine body by slowly pushing the plunger into the straw gun.



21 Gently remove gun and v-spreader. Check for abnormal discharge and a complete semen deposit. Record when and to what sire, the animal was bred.