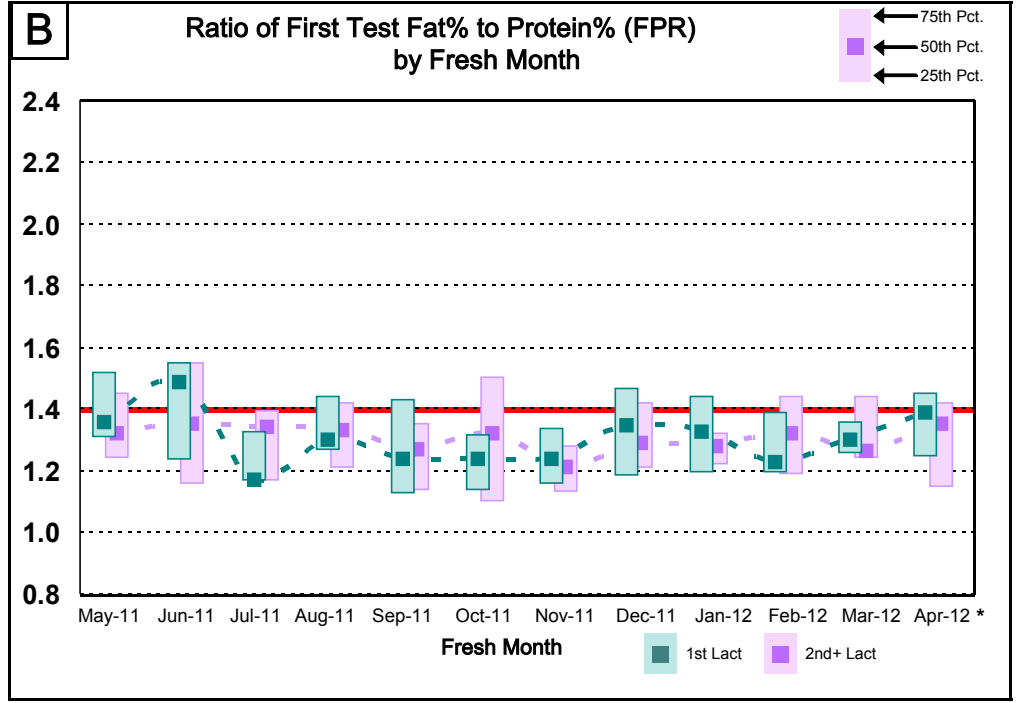
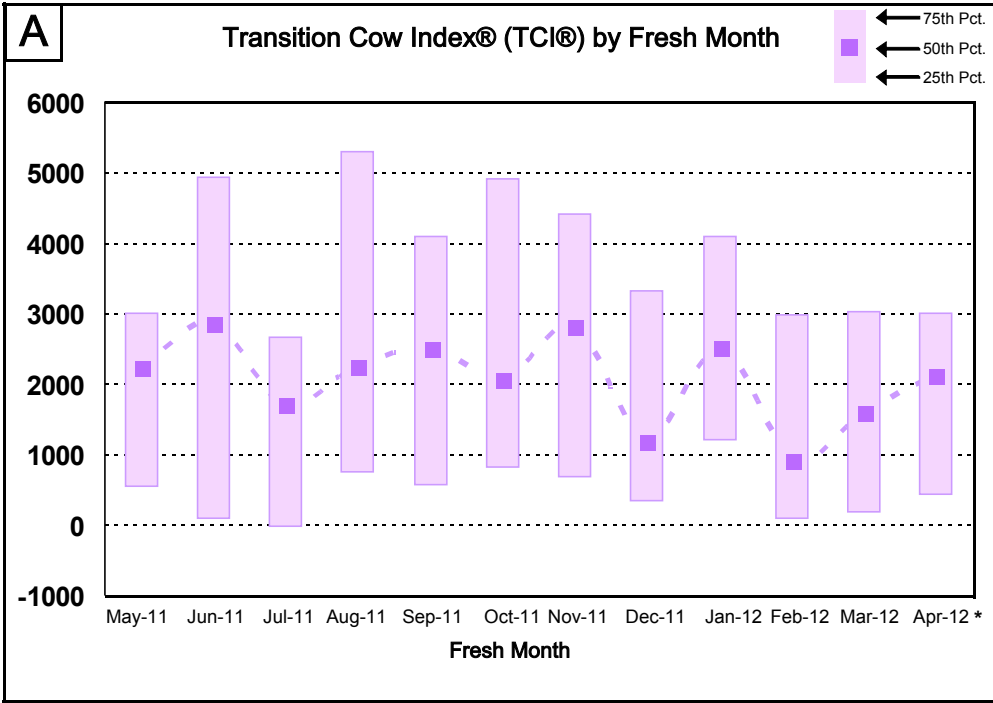




MAY 2012

Herd Code 35990893 Test Date 5/18/2012
Name FRESH COW DAIRY



Cow Populations - Transition Cow Index - Fat/Protein Ratio Using Monthly Averages

* Averages for the last month include cows that have calved since the 1st day of the current month.

Fresh Month	Mar-11	Apr-11	May-11	Jun-11	Jul-11	Aug-11	Sep-11	Oct-11	Nov-11	Dec-11	Jan-12	Feb-12	Mar-12	Apr-12*	Annual	
C Number of Cows (actual number by month)															Avg#/Mo	Total
1st Lact Calving	16	12	7	17	11	7	30	41	24	21	10	10	17	18	18	213
2nd+ Lact Calving	26	33	29	33	39	40	37	43	30	34	35	34	30	30	34	414
Total	42	45	36	50	50	47	67	84	54	55	45	44	47	48	51	627

D Transition Cow Index	Industry benchmarks for annual average TCI: >= 80th percentile is >= 719 lbs; average is -6 lbs; <= 20th percentile is <= -747 lbs														Average
Average TCI	1824	2012	1278	2213	1357	2860	2515	2725	2780	1792	2667	1414	1729	1693	2139
Percent With TCI	92%	88%	97%	91%	56%	83%	92%	95%	97%	91%	94%	100%	90%	83%	89%

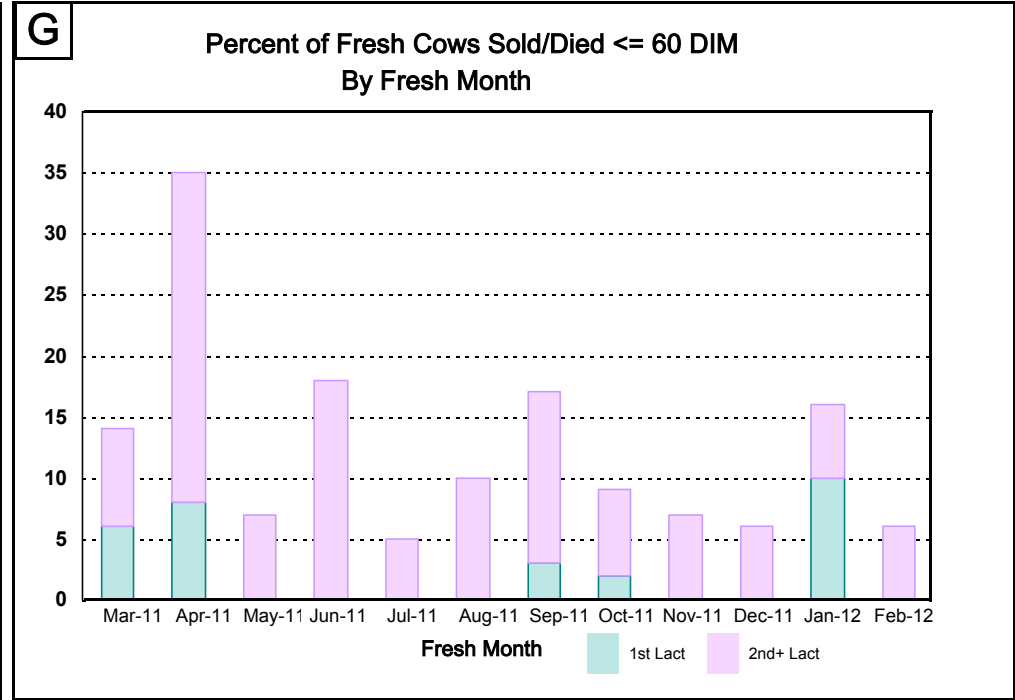
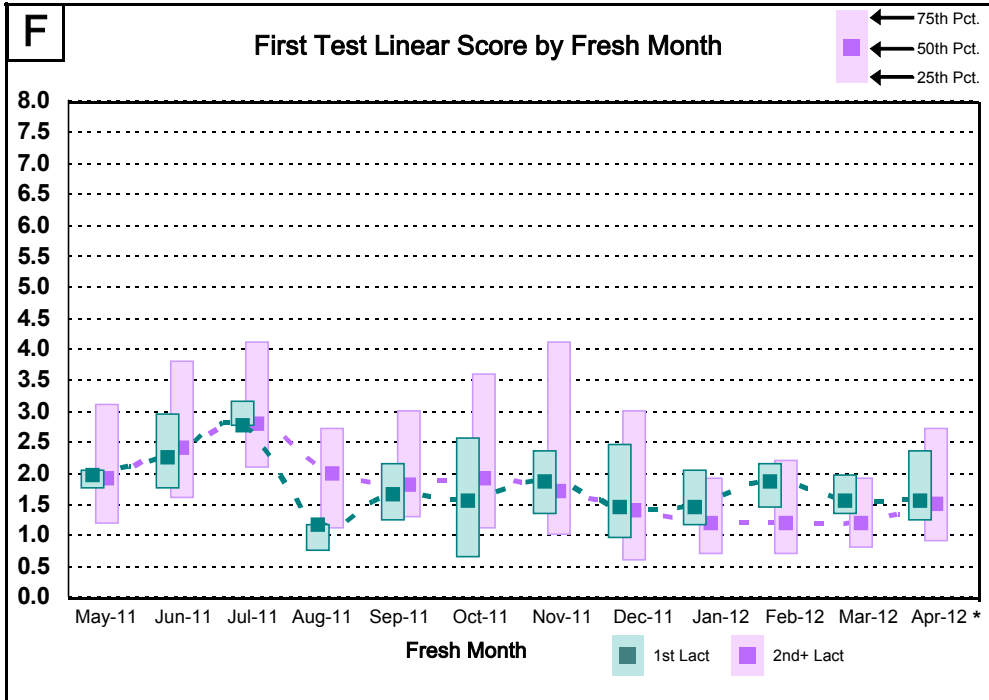
E Percent FPR > 1.4	Goal is < 40% of cows (1st or 2+ Lact) with a first test fat/protein ratio > 1.4														Average
1st Lact	7%	25%	43%	59%	33%	40%	33%	15%	21%	39%	33%	30%	20%	38%	31%
2nd+ Lact	33%	31%	32%	47%	23%	30%	18%	39%	21%	26%	15%	35%	29%	31%	29%

Transition Cow Index® and TCI® U.S. Patent #7866691 Wisconsin Alumni Research Foundatio



MAY 2012

Herd Code 35990893 Test Date 5/18/2012
Name FRESH COW DAIRY



Infections & Cures, Sold or Died and Turnover ≤ 60 DIM Using Monthly Averages

* Averages for the last month include cows that have calved since the 1st day of the current month.

Fresh Month	Mar-11	Apr-11	May-11	Jun-11	Jul-11	Aug-11	Sep-11	Oct-11	Nov-11	Dec-11	Jan-12	Feb-12	Mar-12	Apr-12*	Annual
H New Infections and Dry Cures	Goals are < 11% new infection rate (for 1st or 2+ lact cows) and > 78% dry period cure rate														Average
1st Lact New Infections	0%	8%	0%	0%	0%	0%	7%	10%	0%	17%	0%	0%	0%	6%	5%
2nd+ Lact New Infections	0%	0%	7%	7%	18%	0%	6%	17%	7%	6%	6%	12%	0%	0%	7%
Dry Cures	86%	100%	70%	69%	60%	50%	93%	50%	45%	75%	88%	78%	100%	60%	71%

I Number of Sold or Died Events ≤ 60 DIM (actual number by month)	Data in Block I do not include animals sold for dairy														Total ¹	Pct ¹
1st Lact Sold	1	1	0	0	0	0	1	1	0	0	0	0	0**	0**	4	2%
1st Lact Died	0	0	0	0	0	0	0	0	0	0	1	0	0**	0**	1	0%
2nd+ Lact Sold	1	5	1	4	1	2	5	3	2	1	2	1	3**	1**	28	7%
2nd+ Lact Died	1	4	1	2	1	2	0	0	0	1	0	1	1**	0**	13	3%

J Turnover Rate ≤ 60 DIM	Industry benchmarks: ≥ 80th percentile is ≤ 4%; average is 8%; ≤ 20th percentile is ≥ 11%													
Sold & Died: 7%	Died: 2%													

** These numbers may increase because cows fresh in the last 2 months have not yet reached 60 DIM.

¹ The total cows and percents are calculated only for cows that calved 2 to 14 months ago and are now > 60 DIM.